



Tel.: +30 2645023789, +30 6981069338 - Email: info@lefkas-landbroker.com

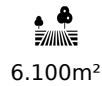
[1335] Apolpaina Sophisticated Luxury

Price: 2.000.000€

A modern villa on a tranquil hillside area with spectacular views onto the city and the sea

A sophisticated and luxurious villa in a hillside environment with uninterrupted views of the Ionian Sea, Lefkas town, and the countless silver-green olive groves. Designed by a well-known Greek architect, the villa encompasses modern and minimal design with eco-friendly materials such as wood and stone.

The total surface of 331 m² spreads out in 3 sleek designed levels. The entire uppe...



2010



✓



✓



5.000m



20m²



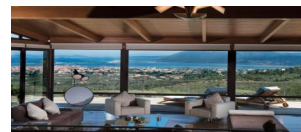
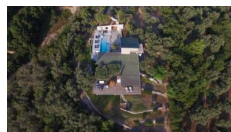
Permission for 35m²



✓



C



A modern villa on a tranquil hillside area with spectacular views onto the city and the sea

A sophisticated and luxurious villa in a hillside environment with uninterrupted views of the Ionian Sea, Lefkas town, and the countless silver-green olive groves. Designed by a well-known Greek architect, the villa encompasses modern and minimal design with eco-friendly materials such as wood and stone.

The total surface of 331 m² spreads out in 3 sleek designed levels. The entire upper level is occupied by the huge master suite of 55m² where the large windows ensure that the spectacular views are always at sight. The room has an en-suite shower room, an open-plan bath, and plenty of free space. At the mid-level, the main entrance opens to the extra spacious living, dining, and kitchen areas where your eye is automatically drawn to the uninterrupted breathtaking views thanks to the floor-to-ceiling glass walls. The living room is beautifully decorated and furnished and features a fireplace and a famous Catellani & Smith lighting unit resembling the moon. The dining area can comfortably seat 10 people. The kitchen is fully equipped with high-quality appliances and the cupboard doors are made from Murano glass. On this level, you will also find one bedroom with a king-size bed and an en-suite bathroom.

The lower level features another bedroom with an ensuite shower room and a brand new guest studio suitable for 4 guests. The same attention which has been given to the interior has been given to the exterior space as well. Selective elements of the environment have been integrated into the design, with olive trees naturally blending with the outdoor wooden deck, while an old stone fence stretches the villa's main living area, creating a magnificent sculpture.